

WARNING — To reduce the risk of burns, electrocution, fire, or injury to persons:

- This appliance should never be left unattended when plugged in.**
- Do not pull, twist, or wrap line cord around appliance.
- This appliance should not be used by, on or near children or individuals with certain disabilities.

- Do not use while bathing or in the shower.
- Do not place or store appliance where it can fall or be pulled into a tub or sink.
- Do not place in, or drop into, water or other liquid.
- If an appliance falls into water, unplug it immediately. **Do not reach into the water.**

1. **Always unplug appliance immediately after using.**

the risk of death by electric shock:

cally live even when the switch is off. To reduce the risk of death by electric shock:

KEEP AWAY FROM WATER

BEFORE USING

READ ALL INSTRUCTIONS

following:

When using electrical appliances, especially when children are present, basic safety precautions should always be followed, including the

IMPORTANT SAFETY INSTRUCTIONS

Use this appliance only for its intended use, as described in this manual. Do not use attachments not recommended by the manufacturer.

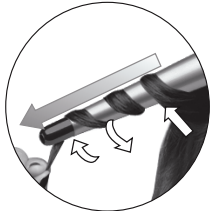


FUNDAMENTOS DEL RIZADO

Para lograr resultados óptimos, aplique una loción fijadora ligera al cabello antes de secarlo.

1 Divida el cabello en secciones de 1 pulgada (2.5 cm).

2 Empezando a 2 pulgadas (5 cm) de la raíz, enrolle el cabello alrededor del tubo hacia la extremidad.



3 Sostenga el cabello por las puntas durante 5 a 8 segundos (según el tipo de cabello), luego desenrolle delicadamente el cabello. Siempre obtendrá hermosos resultados, fácil y rápidamente. Para obtener rizos más apretados, divida el cabello en secciones más finas. Para obtener ondas más sueltas, enrolle más cabello. Permita que el cabello enfríe antes de peinarlo para "fijar" los rizos.

4 Repita el proceso con las otras secciones de cabello.

Use handles or knobs.

14. Do not touch hot surfaces of the appliance.

15. Do not attempt to touch the housing of your appliance near the barrel, as it is hot when in use.

13. Do not use an extension cord with this appliance.

12. Never block the air openings of the appliance or place on a soft surface such as a bed or couch, where the air openings may be blocked. Keep the air openings free of lint and other debris.

11. **Do not place the heated unit directly on any surface while it is hot or plugged in.**

10. Unit is hot when in use. Do not let heated surface touch eyes or skin.

9. Do not use outdoors or operate where aerosol (spray) products are being used or where oxygen is being administered.

8. Never drop or insert any object into any opening or hose.

7. Never use while sleeping.

6. Keep the cord away from heated surfaces.

5. **Never operate this appliance if it has a damaged cord or plug, if it is not working properly or if it has been dropped or damaged, or dropped into water. Return the appliance to an authorized service center for examination and repair.**

4. Use this appliance only for its intended use, as described in this manual. Do not use attachments not recommended by the manufacturer.

OPERATING INSTRUCTIONS

SELECCIÓN DE LA TEMPERATURA

El cabello debe estar limpio y seco. Enchufe el aparato. Encienda el aparato. La luz de encendido/bajo (285 °F) se encenderá. Permita que el aparato caliente durante 30 segundos.

ADVERTENCIA: El tubo se volverá muy caliente en segundos. Evite todo contacto con la piel después de encender el aparato.

Sus tenacillas le permiten escoger entre 5 niveles ultra-altos de temperatura, según su tipo de cabello. Si su cabello es fino, le recomendamos que utilice un nivel de temperatura bajo. Si su cabello es espeso, grueso, ondulado o resistente, le recomendamos que utilice un nivel de temperatura alto.
¡Personalice la temperatura, según su tipo de cabello!

AJUSTE DE TEMPERATURA	TIPO DE CABELLO
Encendido/Bajo (285°F)	Cabello delicado, fino o dócil
Medio (310°F)	Cabello normal, espeso o tratado
Medio-Alto (330°F)	Cabello grueso u ondulado
Alto/Max (360–400°F)	Cabello resistente

LED TEMP. CONTROL	HAIR TYPE
Power/Low 285°F	Delicate, thin, easy-to-curl hair
Medium 310°F	Average-to-thick or treated hair
Med-High 330°F	Thick or wavy hair
High/Max 360°F - 400°F	Hard-to-curl hair

Temperature Setting Guide

particular need!

the wand's temperature according to your hair, keep the heat setting on high. You can vary results. If you have thick, wavy or hard-to-curl fine hair, a low temperature will provide the best styling versatility for all hair types. If you have settings and instant Heat technology provide The wand's unique 5 ultra-high heat temperature **curling wand has been turned on.**

WARNING: The curling wand's barrel will get very hot within a few seconds and should not be placed in contact with the skin after the curling wand has been turned on.

to heat up for 30 seconds.

285°F setting will become illuminated. Allow unit electrical outlet. Turn on unit. The Power/Low Hair should be clean and completely dried before getting started

GETTING STARTED

For best results, use a light styling product before blow-drying hair.

14. No toque las partes calientes de este aparato. Utilice las asas o las perillas.

15. El cuerpo del aparato cerca de la salida de aire se vuelve muy caliente durante el uso. No lo toque.

GUARDE ESTAS INSTRUCCIONES

INSTRUCCIONES DE OPERACIÓN

Para uso doméstico solamente. Úselo solamente con Corriente Alterna (60 Hz) de 120 voltios (120V AC).

El cable de este aparato está dotado de una clavija polarizada (una pata es más ancha que otra). Como medida de seguridad, se podrá enchufar de una sola manera en el tomacorriente polarizado. Si no entrara en el tomacorriente, inviértela. Si aún no entrara completamente, comuníquese con un electricista. No intente ir en contra de esta función de seguridad.

Some experience is necessary when learning hair until you achieve the hair style you desire.

4 Repeat process on additional sections of hair until you achieve the hair style you desire.

brush hair until it cools.

more hair. To "set" the curl, do not comb or roll less hair. For loose, free flowing curls, roll hair without kinks. For tighter, bouncier curls, then release. No clamp allows you to easily curl tip for 5-8 seconds depending on hair type, and then then rewrap.

3 Hold the end of the hair in place at the cool tip of the barrel towards the cool tip.

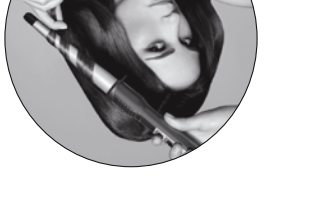
portion of the barrel towards the thicker section of hair around the thicker portion of the barrel towards the cool tip.

2 Wind the section of hair around the thicker portion of the barrel towards the cooler tip.

1 Take a 1" wide section of hair, starting 2" from the scalp.

For best results, use a light styling product before blow-drying hair.

TO CURL HAIR



Use this appliance only for its intended use, as described in this manual. Do not use attachments not recommended by the manufacturer.

2. No jale, retuerza ni enrolle el cable alrededor del aparato.

3. Este aparato no debería ser usado por, sobre o cerca de niños o personas con alguna discapacidad.

4. Utilice este aparato únicamente con el propósito para el cual fue diseñado y solamente según las instrucciones. Sólo use accesorios recomendados por el fabricante.

5. **No opere este aparato si el cordón o la clavija estuviesen dañados, después de que hubiese funcionado mal o que se hubiese caído o si estuviese dañado. Regrese el aparato a un centro de servicio autorizado para su revisión, reparación o ajuste.**

6. Mantenga el cable alejado de superficies calientes.

7. Nunca utilice este aparato mientras esté dormido/a o adormilado/a.

8. Nunca deje caer ni inserte un objeto en ninguna de las aberturas.

9. No lo utilice en exteriores, ni lo haga funcionar donde se estén usando productos en aerosol (spray) o donde se esté administrando oxígeno.

10. Este aparato se vuelve muy caliente. Mantenga los ojos y la piel alejados de las superficies calientes.

11. **No coloque el aparato en ninguna superficie mientras esté caliente o conectado.**

12. Nunca bloquee las aberturas de aire ni coloque el aparato en una superficie blanda, como una cama o un sofá, donde se puedan obstruir. Mantenga las aberturas libres de pelusas, cabellos y elementos similares.

13. No utilice una extensión con este aparato.

Use handles or knobs.

14. Do not touch hot surfaces of the appliance.

15. Do not attempt to touch the housing of your appliance near the barrel, as it is hot when in use.

13. Do not use an extension cord with this appliance.

12. Never block the air openings of the appliance or place on a soft surface such as a bed or couch, where the air openings may be blocked. Keep the air openings free of lint and other debris.

11. **Do not place the heated unit directly on any surface while it is hot or plugged in.**

10. Unit is hot when in use. Do not let heated surface touch eyes or skin.

9. Do not use outdoors or operate where aerosol (spray) products are being used or where oxygen is being administered.

8. Never drop or insert any object into any opening or hose.

7. Never use while sleeping.

6. Keep the cord away from heated surfaces.

5. **Never operate this appliance if it has a damaged cord or plug, if it is not working properly or if it has been dropped or damaged, or dropped into water. Return the appliance to an authorized service center for examination and repair.**

4. Use this appliance only for its intended use, as described in this manual. Do not use attachments not recommended by the manufacturer.

Use handles or knobs.

14. Do not touch hot surfaces of the appliance.

15. Do not attempt to touch the housing of your appliance near the barrel, as it is hot when in use.

13. Do not use an extension cord with this appliance.

12. Never block the air openings of the appliance or place on a soft surface such as a bed or couch, where the air openings may be blocked. Keep the air openings free of lint and other debris.

11. **Do not place the heated unit directly on any surface while it is hot or plugged in.**

10. Unit is hot when in use. Do not let heated surface touch eyes or skin.

9. Do not use outdoors or operate where aerosol (spray) products are being used or where oxygen is being administered.

8. Never drop or insert any object into any opening or hose.

7. Never use while sleeping.

6. Keep the cord away from heated surfaces.

5. **Never operate this appliance if it has a damaged cord or plug, if it is not working properly or if it has been dropped or damaged, or dropped into water. Return the appliance to an authorized service center for examination and repair.**

4. Use this appliance only for its intended use, as described in this manual. Do not use attachments not recommended by the manufacturer.

Use handles or knobs.

14. Do not touch hot surfaces of the appliance.

15. Do not attempt to touch the housing of your appliance near the barrel, as it is hot when in use.

13. Do not use an extension cord with this appliance.

12. Never block the air openings of the appliance or place on a soft surface such as a bed or couch, where the air openings may be blocked. Keep the air openings free of lint and other debris.

11. **Do not place the heated unit directly on any surface while it is hot or plugged in.**

10. Unit is hot when in use. Do not let heated surface touch eyes or skin.

9. Do not use outdoors or operate where aerosol (spray) products are being used or where oxygen is being administered.

8. Never drop or insert any object into any opening or hose.

7. Never use while sleeping.

6. Keep the cord away from heated surfaces.

5. **Never operate this appliance if it has a damaged cord or plug, if it is not working properly or if it has been dropped or damaged, or dropped into water. Return the appliance to an authorized service center for examination and repair.**

4. Use this appliance only for its intended use, as described in this manual. Do not use attachments not recommended by the manufacturer.

Use handles or knobs.

14. Do not touch hot surfaces of the appliance.

15. Do not attempt to touch the housing of your appliance near the barrel, as it is hot when in use.

13. Do not use an extension cord with this appliance.

12. Never block the air openings of the appliance or place on a soft surface such as a bed or couch, where the air openings may be blocked. Keep the air openings free of lint and other debris.

11. **Do not place the heated unit directly on any surface while it is hot or plugged in.**

10. Unit is hot when in use. Do not let heated surface touch eyes or skin.

9. Do not use outdoors or operate where aerosol (spray) products are being used or where oxygen is being administered.

8. Never drop or insert any object into any opening or hose.

7. Never use while sleeping.

6. Keep the cord away from heated surfaces.

5. **Never operate this appliance if it has a damaged cord or plug, if it is not working properly or if it has been dropped or damaged, or dropped into water. Return the appliance to an authorized service center for examination and repair.**

4. Use this appliance only for its intended use, as described in this manual. Do not use attachments not recommended by the manufacturer.

Use handles or knobs.

14. Do not touch hot surfaces of the appliance.

15. Do not attempt to touch the housing of your appliance near the barrel, as it is hot when in use.

13. Do not use an extension cord with this appliance.

12. Never block the air openings of the appliance or place on a soft surface such as a bed or couch, where the air openings may be blocked. Keep the air openings free of lint and other debris.

11. **Do not place the heated unit directly on any surface while it is hot or plugged in.**

10. Unit is hot when in use. Do not let heated surface touch eyes or skin.

9. Do not use outdoors or operate where aerosol (spray) products are being used or where oxygen is being administered.

8. Never drop or insert any object into any opening or hose.

7. Never use while sleeping.

6. Keep the cord away from heated surfaces.

5. **Never operate this appliance if it has a damaged cord or plug, if it is not working properly or if it has been dropped or damaged, or dropped into water. Return the appliance to an authorized service center for examination and repair.**

4. Use this appliance only for its intended use, as described in this manual. Do not use attachments not recommended by the manufacturer.

Use handles or knobs.

14. Do not touch hot surfaces of the appliance.

15. Do not attempt to touch the housing of your appliance near the barrel, as it is hot when in use.

13. Do not use an extension cord with this appliance.

12. Never block the air openings of the appliance or place on a soft surface such as a bed or couch, where the air openings may be blocked. Keep the air openings free of lint and other debris.

11. **Do not place the heated unit directly on any surface while it is hot or plugged in.**

10. Unit is hot when in use. Do not let heated surface touch eyes or skin.

9. Do not use outdoors or operate where aerosol (spray) products are being used or where oxygen is being administered.

8. Never drop or insert any object into any opening or hose.

7. Never use while sleeping.

6. Keep the cord away from heated surfaces.

5. **Never operate this appliance if it has a damaged cord or plug, if it is not working properly or if it has been dropped or damaged, or dropped into water. Return the appliance to an authorized service center for examination and repair.**

4. Use this appliance only for its intended use, as described in this manual. Do not use attachments not recommended by the manufacturer.

Use handles or knobs.

14. Do not touch hot surfaces of the appliance.

15. Do not attempt to touch the housing of your appliance near the barrel, as it is hot when in use.

13. Do not use an extension cord with this appliance.

12. Never block the air openings of the appliance or place on a soft surface such as a bed or couch, where the air openings may be blocked. Keep the air openings free of lint and other debris.

11. **Do not place the heated unit directly on any surface while it is hot or plugged in.**

10. Unit is hot when in use. Do not let heated surface touch eyes or skin.

9. Do not use outdoors or operate where aerosol (spray) products are being used or where oxygen is being administered.

8. Never drop or insert any object into any opening or hose.

7. Never use while sleeping.

6. Keep the cord away from heated surfaces.

5. **Never operate this appliance if it has a damaged cord or plug, if it is not working properly or if it has been dropped or damaged, or dropped into water. Return the appliance to an authorized service center for examination and repair.**

4. Use this appliance only for its intended use, as described in this manual. Do not use attachments not recommended by the manufacturer.

Use handles or knobs.

14. Do not touch hot surfaces of the appliance.

15. Do not attempt to touch the housing of your appliance near the barrel, as it is hot when in use.

13. Do not use an extension cord with this appliance.

12. Never block the air openings of the appliance or place on a soft surface such as a bed or couch, where the air openings may be blocked. Keep the air openings free of lint and other debris.

11. **Do not place the heated unit directly on any surface while it is hot or plugged in.**

10. Unit is hot when in use. Do not let heated surface touch eyes or skin.

9. Do not use outdoors or operate where aerosol (spray) products are being used or where oxygen is being administered.

8. Never drop or insert any object into any opening or hose.

7. Never use while sleeping.

6. Keep the cord away from heated surfaces.

5. **Never operate this appliance if it has a damaged cord or plug, if it is not working properly or if it has been dropped or damaged, or dropped into water. Return the appliance to an authorized service center for examination and repair.**

4. Use this appliance only for its intended use, as described in this manual. Do not use attachments not recommended by the manufacturer.

Use handles or knobs.

14. Do not touch hot surfaces of the appliance.

15. Do not attempt to touch the housing of your appliance near the barrel, as it is hot when in use.

13. Do not use an extension cord with this appliance.

12. Never block the air openings of the appliance or place on a soft surface such as a bed or couch, where the air openings may be blocked. Keep the air openings free of lint and other debris.

11. **Do not place the heated unit directly on any surface while it is hot or plugged in.**

10. Unit is hot when in use. Do not let heated surface touch eyes or skin.

9. Do not use outdoors or operate where aerosol (spray) products are being used or where oxygen is being administered.

8. Never drop or insert any object into any opening or hose.

7. Never use while sleeping.

6. Keep the cord away from heated surfaces.

5. **Never operate this appliance if it has a damaged cord or plug, if it is not working properly or if it has been dropped or damaged, or dropped into water. Return the appliance to an authorized service center for examination and repair.**

4. Use this appliance only for its intended use, as described in this manual. Do not use attachments not recommended by the manufacturer.

Use handles or knobs.

14. Do not touch hot surfaces of the appliance.

15. Do not attempt to touch the housing of your appliance near the barrel, as it is hot when in use.

13. Do not use an extension cord with this appliance.

12. Never block the air openings of the appliance or place on a soft surface such as a bed or couch, where the air openings may be blocked. Keep the air openings free of lint and other debris.

11. **Do not place the heated unit directly on any surface while it is hot or plugged in.**

10. Unit is hot when in use. Do not let heated surface touch eyes or skin.

9. Do not use outdoors or operate where aerosol (spray) products are being used or where oxygen is being administered.

8. Never drop or insert any object into any opening or hose.

7. Never use while sleeping.

6. Keep the cord away from heated surfaces.

5. **Never operate this appliance if it has a damaged cord or plug, if it is not working properly or if it has been dropped or damaged, or dropped into water. Return the appliance to an authorized service center for examination and repair.**

4. Use this appliance only for its intended use, as described in this manual. Do not use attachments not recommended by the manufacturer.

Use handles or knobs.

14. Do not touch hot surfaces of the appliance.

15. Do not attempt to touch the housing of your appliance near the barrel, as it is hot when in use.

13. Do not use an extension cord with this appliance.

12. Never block the air openings of the appliance or place on a soft surface such as a bed or couch, where the air openings may be blocked. Keep the air openings free of lint and other debris.

11. **Do not place the heated unit directly on any surface while it is hot or plugged in.**

10. Unit is hot when in use. Do not let heated surface touch eyes or skin.

9. Do not use outdoors or operate where aerosol (spray) products are being used or where oxygen is being administered.

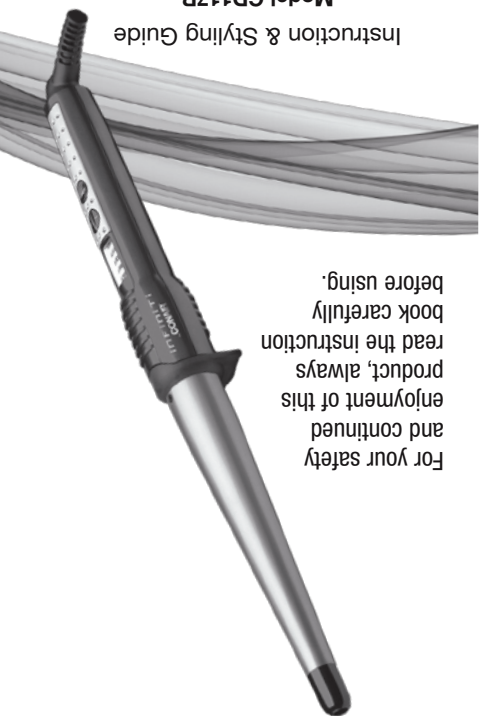
8. Never drop or insert any object into any opening or hose.

7. Never use while sleeping.

6. Keep the cord away from heated surfaces.

5. **Never operate this appliance if it has a damaged cord or plug, if it is not working properly or if it has been dropped or damaged, or dropped into water. Return the appliance to an authorized service center for examination and repair.**

4. Use this appliance only for its intended use, as described in this manual. Do not use attachments not recommended by the manufacturer.



you curl
 your tourmaline
 ceramic styler

For your safety and continued enjoyment of this product, always read the instruction book carefully before using.

FAMILIARÍCESE CON SU RIZADOR



"guante" protector termo-resistente

For info on any Conair or Infiniti by Conair product, call: 1-800-3-CONAIR or visit us on the web at: www.conair.com/infiniti

SERVICE CENTER
 CONAIR CORPORATION
 Service Department
 7475 N. Glen Harbor Blvd
 Glendale, AZ 85307
 ©2010 Conair Corporation

INSTRUCCIONES DE MANTENIMIENTO

Su aparato casi no necesita mantenimiento. No necesita lubricación. Mantenga todas las aberturas libres de polvos y pelusas. Cuando sea necesario limpiarlo, desenchúfelo, permita que enfíe y limpie la superficie exterior con un paño humedecido. En caso de mal funcionamiento, desconecte el aparato, permita que enfíe y regréselo a un centro de servicio autorizado. No trate de repararlo.

PRECAUCIÓN

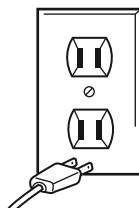
NUNCA jale, retuerza ni doble mucho el cable. Nunca lo enrolle con fuerza alrededor del aparato. Esto podría dañar la junta flexible que lo conecta al aparato, produciendo su ruptura o un cortocircuito. Inspeccione el cable con frecuencia para asegurarse que no esté dañado. Deje de usar el aparato inmediatamente si el cable parece dañado o si el aparato dejara de funcionar o funcionara de manera intermitente.

ALMACENAJE

Cuando no lo utiliza, su aparato es fácil de almacenar. Permita que enfíe y guárdelo en un lugar seco y seguro, fuera del alcance de los niños. No tiree ni retuerza el cable al nivel del enchufe. No enrolle el cable alrededor del aparato. Permita que el cable cuelgue o que la junta que lo conecta al secador esté suelta y recta.

**ADVERTENCIA:
 SI CREE QUE NO HAY
 CORRIENTE CUANDO
 EL APARATO ESTÁ
 APAGADO, ESTÁ
 EQUIVOCADO.**

MANTÉNGALO ALEJADO DEL AGUA



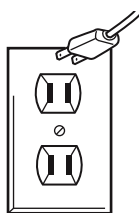
Todos sabemos que no se debe mezclar la electricidad y el agua. Pero ¿Sabe usted que un aparato eléctrico permanece bajo tensión aunque esté apagado? Si está conectado, hay corriente. Por lo tanto, siempre desenchufe los aparatos eléctricos después de usarlos.

**SIEMPRE DESENCHUFE
 LOS APARATOS PEQUEÑOS**

LIMITED FIVE YEAR WARRANTY
 Conair will repair or replace (at our option) your unit free of charge for 60 months from the date of purchase if the appliance is defective in workmanship or materials.
 To obtain service under this warranty, return the defective product to the service center listed below, together with your purchase receipt and \$5.00 for postage and handling. California residents need only provide proof of purchase and should call 1-800-3-CONAIR for shipping instructions. In the absence of a purchase receipt, the warranty period shall be 60 months from the date of manufacture.
TO THE 60 MONTH DURATION OF THIS WRIT- TEN, LIMITED WARRANTY, SOME STATES DO NOT ALLOW LIMITATIONS ON HOW LONG AN IMPLIED WARRANTY LASTS, SO THE ABOVE LIMITATIONS MAY NOT APPLY TO YOU.
IN NO EVENT SHALL CONAIR BE LIABLE FOR ANY SPECIAL, INCIDENTAL, OR CONSEQUENTIAL DAMAGES FOR BREACH OF THIS OR ANY OTHER WARRANTY, EXPRESS OR IMPLIED, WHATSOEVER, INCLUDING BUT NOT LIMITED TO THE IMPLIED WARRANTIES, OBLIGATIONS, OR LIABILITIES, INCLUDING BUT NOT LIMITED TO THE IMPLIED WARRANTY OF MERCHANTABILITY AND FITNESS FOR A PARTICULAR PURPOSE, SHALL BE LIMITED IN DURATION TO THE 60 MONTH DURATION OF THIS WRIT- TEN, LIMITED WARRANTY. Some states do not allow limitations on how long an implied warranty lasts, so the above limitations may not apply to you.

Everyone knows that electricity and water are a dangerous combination. But did you know that an electric appliance is still electrically live even if the switch is off? If the plug is in, the power is on. So when you are not using your appliances, keep them unplugged.
ALWAYS UNPLUG SMALL APPLIANCES
 This warranty gives you specific legal rights, and you may also have other rights, which vary from state to state.

**WARNING:
 IF YOU THINK
 THE POWER IS OFF
 IS OFF,
 YOU'RE WRONG.
 KEEP AWAY FROM WATER**



NEVER allow the power supply cord to be pulled, twisted, or severely bent. Never wrap the cord tightly around the appliance. Damage will occur at the high flex point of entry into the appliance, causing it to rupture and short circuit. Inspect the cord frequently for damage. Stop use immediately if damage is visible or if unit stops or operates intermittently.
STORAGE
 When not in use, your appliance is easy to store. Allow appliance to cool, then simply store out of reach of children in a safe, dry location. Do not jerk or strain cord at plug connections. Do not wrap the line cord around the appliance. Allow the cord to hang or lie loose and straight at the point of entry into the appliance.

GARANTÍA LIMITADA DE CINCO AÑOS

Conair reparará o reemplazará (a su opción) su aparato sin cargo por un período de 60 meses a partir de la fecha de compra si presentara defectos de materiales o fabricación.

Para obtener servicio técnico bajo esta garantía, regrese su aparato al Centro de Servicio indicado a continuación, junto con su recibo de compra y un cheque o giro postal de US\$5.00 por gastos de manejo y envío. Los residentes de California sólo necesitan dar una prueba de compra y deben llamar al 1-800-3-CONAIR para recibir instrucciones de envío. En ausencia del recibo de compra, el período de garantía será de 60 meses a partir de la fecha de fabricación.

CUALQUIER GARANTÍA, OBLIGACIÓN O RESPONSABILIDAD IMPLÍCITAS, INCLUYENDO PERO NO LIMITADAS A LA GARANTÍA IMPLÍCITA DE COMERCIABILIDAD Y APTITUD PARA UN PROPÓSITO ESPECÍFICO, ESTARÁN LIMITADAS POR LOS 60 MESES DE LA PRESENTE GARANTÍA ESCRITA. Algunos Estados no permiten limitaciones sobre la duración de una garantía implícita, de modo que las limitaciones mencionadas pueden no regir para usted.

CONAIR NO SERÁ RESPONSABLE EN NINGÚN CASO POR ALGÚN DAÑO ESPECIAL, INCIDENTAL O CONSECUENTE DEBIDO AL INCUMPLIMIENTO DE ESTA O CUALQUIER OTRA GARANTÍA, EXPRESA O IMPLÍCITA. Algunos Estados no permiten la exclusión o limitación de daños especiales, incidentales o consecuentes, de modo que las limitaciones mencionadas pueden no regir para usted.

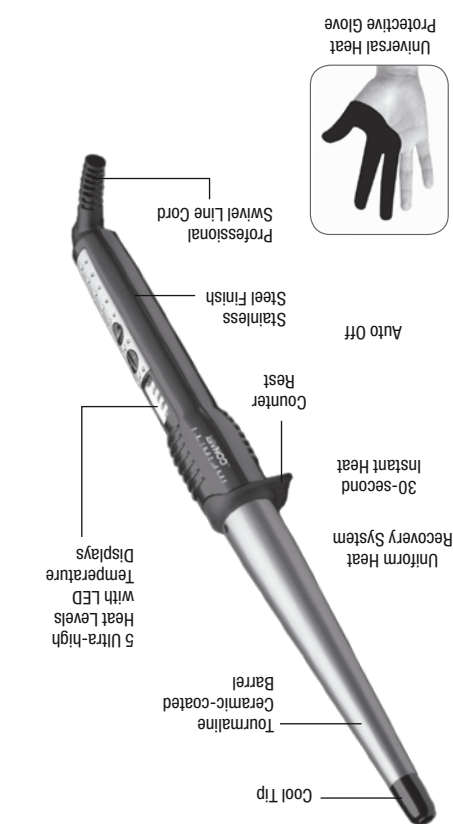
Esta garantía le otorga derechos legales específicos y usted puede tener otros derechos que varían de un Estado a otro.

USER MAINTENANCE
 Your curling wand is virtually maintenance-free. No lubrication is needed. Keep all vents and openings clear of dirt and dust. If cleaning becomes necessary, disconnect the unit from the power source, allow to cool and wipe exterior with a cloth. If any abnormal condition occurs, unplug the unit, allow it to cool, and return it for repair to an authorized service representative only. No repairs should be attempted by the consumer.

GETTING TO KNOW YOUR CURLING WAND
 Uniform Heat Recovery System
 30-second Instant Heat
 Counter Rest
 Stainless Steel Finish
 Professional Swivel Line Cord
 Universal Heat Protective Glove

CENTRO DE SERVICIO
 Conair Corporation
 Service Department
 7475 N. Glen Harbor Blvd
 Glendale, AZ85307
 ©2010 Conair Corporation

Para más información sobre los productos Conair o Infiniti by Conair™, llame al 1-800-3-CONAIR o visítenos en www.conair.com/infiniti



GETTING TO KNOW YOUR CURLING WAND

you curl
 rizador
 con tubo cubierto de
 cerámica y turmalina



Instrucciones
 Modelo CD117R